



Vripack Continental 1650

€399,000 • Wanssum Netherlands • Used • 2002

Presented by

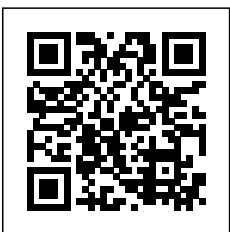
Bram de Groot
Phone: 0031(0)478450015

GrandYachts BV
Geijsterseweg 10
5861 BL Wanssum
Netherlands

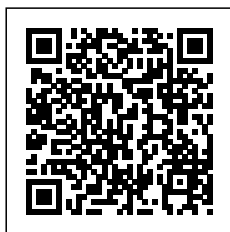
GRANDYACHTS®

Details

| | |
|--------------|--------------------------------|
| Make: | Vripack |
| Model: | Continental 1650 |
| Year: | 2002 |
| Condition: | Used |
| Hull: | Steel |
| Engine: | John Deere 6068 PowerTech 2002 |
| Engine type: | Inboard engine |
| Fuel type: | Diesel |
| Fuel tank: | 5500 l (1,452.95 gal) |
| Length: | 16.5 m (54.13 ft) |
| Beam: | 4.75 m (15.58 ft) |
| Cabins: | 0 |
| Berths: | 2 |
| Watertank: | 2000 l (528.35 gal) |



GrandYachts BV



7zea.com

Description

EU-VAT Paid.

Location: GrandYachts / Wanssum

El Paso is best described as a true passage maker, she can sail for exactly 4000 nautical

miles at cruising speed without refuelling. This **Vripack 1650 Continental** is built to an

extreme level of quality!

At this moment you have the opportunity to see the yacht with 19 year old paint and no corrosion at all, just to show you the quality of this very special yacht.

It is a **stunning yacht** that will beat any competitor and comes for a **fantastic price!**

Built under **CE -Class A** (ocean going)

EU-VAT PAID

170 pictures on our website grandyachts.eu (high-res pictures by e-mail request)

El Paso sleeps 4 in two double staterooms, both with ensuite central heated bathrooms with

shower, wash basins and toilets.

Wheelhouse

El Paso's air-conditioned wheelhouse gives you comfort during your new ocean adventures,

her 25mm bulletproof double glazing withstands the most extreme conditions and a central

fresh air dorade box ventilation system provides fresh air in all compartments when all

glazing and portholes have to be closed.

Behind the Recaro helm seat is ample space for six, on port side an office desk with laptop

connections, navigation chart desk with gooseneck lights, the wheelhouse is completed with

day fridge and freezer.

The rigging is completely hydraulic with the touch of a button, the mast and her self-folding

deck table comes down to decrease height to only 3.20 meters which makes El Paso

suitable for the French Canals with more than 30 cm of headroom left. Under sail her

normal cruising speed of 9 knots is increased by 1,5 knots or

gives the possibility to go down

with 200 rpm to save fuel. Consumption on engine is only 8 litres per hour at cruising

speed, 7 lph with set mainsail.

Main features

- John Deere 6068 diesel (special designed for 24/7/365 operation)

Lifespan approx. 70.000 hours!!

Actual hours only 3177.

- Heavy Duty Mastervolt 24V-95Ah alternator (extra to the standard engine 55Ah

alternator)

- Remote control on engine, bow and stern thrusters

- Naiad Multisea II hydraulic stabilizers

- Onan 11Kw 1500rpm generator (1090 hrs)

- Mastervolt Dakar charger 24V/100Ah

- Mastervolt Dakar inverter 24V>230V / 3000 watt

- Triple reverse cycle airconditioners

- Kabola 17Kw central heating with hot water tap.

- Heavy Arctic insulated hull and superstructure

- Arctic reinforced hull

- Oil bath lifetime sealed propeller shaft

- Hydraulic proportional bow and stern thruster

- Hydraulic anchor winch with 150m chain

- Heavy duty anchor with automatic high pressure fresh water wash plant

- Hydraulic mast with automatic folding deck table

- Full Simrad navigation equipment

- Simrad IS15 windspeed

- Simrad IS15 wind direction

- Simrad IS15 Depth / Log / water temp

- Simrad IS15 Rudder indicator

- Simrad AP20 Autopilot

- Simrad AP21 Handheld autopilot

- Simrad CX54 Master 24 mile Radar / Chart-plotter

- Simrad RA42 12 mile radar

- Simrad CP40 Chart-plotter

- Simrad AI50 Class B AIS transceiver/receiver
- Simrad Satellite TV Dome (70cm ocean class)
- Simrad RT64 VHF Dual-watch
- Simrad EPIRB
- Shipmate RS8300 VHF
- Target Navtex Pro Plus
- Sanshin HR-1012 searchlight
- Nokia 8watt GSM Telephone
- Sony Radio/10 CD changer/MiniDisc
- Bose sound system in wheelhouse
- Bose sound system in living
- Orloco rear-view color camera
- Exalto synchronized wiper control
- Power steering
- Teleflex Morse KE-4 electronic gearshift / throttle
- 8 person TransOcean Class 2 life raft
- 40 tons sea-anchor with 150m line
- Simpson electric 300KG davits

Saloon

The saloon is equipped to a very high level of comfort, central is her large seating with

dining table. A king size galley with 4 zone induction cooker, fridge, AEG dishwasher, Bosch

Oven/grill/microwave, Saeco coffee machine, trash compactor and cutlery carousel.

Plenty cupboards and other spaces house all needed equipment for a perfect live aboard.

SAT-TV, DVD, DVB-T TV and a Bose sound system completes the entertainment.

Master stateroom

In the bow you find the central heated and air-conditioned master stateroom with king-size

French bed and an ensuite bathroom, with shower, wash basin and 90cm shower with

sliding glass, toilet and towel radiator.

Guest stateroom

On starboard you find the ample sized central heated and air-conditioned guest stateroom

with a French double bed, a bathroom, with shower, wash basin, shower with sliding glass,

toilet and towel radiator.

This bathroom also provides access to El Paso's piece of engineering, the engine room.

Corridor

In the large corridor between the wheelhouse and the two staterooms you find invisible

integrated cupboards that houses a vacuum cleaner, ironing board, washing machine and

dryer. Further it houses a well-lighted basement over her full beam for provisions and other

needed gear or equipment.

Engine room

El Paso's true masterpiece is without doubt the engine room, engineered to perfection in

every form! The 6068 PowerTech 6.8 liter John Deere normally delivers 400 hp and is

delivered by John Deere to last at least 30.000 operating hours with an expected life span of 70k hours. This exclusive factory custom option was set from new to deliver 175hp. Fully fitted with DeBug magnetic fuel polishers and filters ensures clean fuel even after filling with polluted fuel.

A very large hydraulic PTO was installed to give hydraulic power to all El Paso's features.

Inside her engine room you find manifold features to pump fuel from and to any of her 4

tanks (5500litres total) which makes transatlantic crossings easy. Water disinfectors with UV

ensures fresh tap water (2000 L) under all circumstances. A heavy duty suction pump (as

extra to the normal bilge-pumps) with 12 way manifold gives the opportunity to empty, flush

or wash all compartments.

A work-bench, spare parts cupboard, tool box and an extensive list of more features are

installed this engine room you normally find on megayachts.

Garage

Under the aft deck is a huge central heated garage housed with air-compressor, king size

freezer, tons of spare parts in specially designed cupboards, spare propeller, twin bicycles,

deck chairs etc.

Electric 300kg heavy duty Simpson davits can carry any dinghy up to 4 metres.

Material

El Paso was built out of special treated steel, keel 12mm, hull 5mm, superstructure 5mm,

solid teak decks 22mm.

Steering System
Joystick Control
Disclaimer

GrandYachts offers the details of this vessel in good faith but cannot guarantee or warrant the accuracy of this information nor warrant the condition of the vessel. A buyer should instruct his agents, or his surveyors, to investigate such details as the buyer desires validated. This vessel is offered subject to prior sale, price change, or withdrawal without notice.

General information

| | |
|------------|------------------|
| Make: | Vripack |
| Model: | Continental 1650 |
| Year: | 2002 |
| Condition: | Used |
| Hull: | Steel |

Engine

| | |
|--------------|--------------------------------|
| Engine: | John Deere 6068 PowerTech 2002 |
| Engine type: | Inboard engine |
| Fuel type: | Diesel |
| Fuel tank: | 5500 l (1,452.95 gal) |

Measurements

| | |
|---------|-------------------|
| Length: | 16.5 m (54.13 ft) |
| Beam: | 4.75 m (15.58 ft) |
| Deep: | 0 m (0.00 ft) |

Accommodation

| | |
|--------------|---------------------|
| Cabins: | 0 |
| Berths: | 2 |
| Watertank: | 2000 l (528.35 gal) |
| Holdingtank: | 500 l (132.09 gal) |

Images



Vripack Continental 1650



Vripack Continental 1650



Vripack Continental 1650



Vripack Continental 1650



Vripack Continental 1650



Vripack Continental 1650



Vripack Continental 1650



Vripack Continental 1650



Vripack Continental 1650



Vripack Continental 1650



Vripack Continental 1650



Vripack Continental 1650



Vripack Continental 1650



Vripack Continental 1650



Vripack Continental 1650



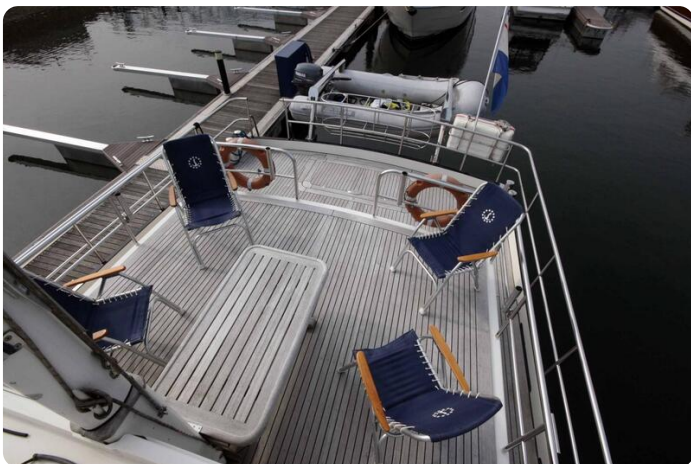
Vripack Continental 1650



Vripack Continental 1650



Vripack Continental 1650



Vripack Continental 1650



Vripack Continental 1650



Vripack Continental 1650



Vripack Continental 1650



Vripack Continental 1650



Vripack Continental 1650



Vripack Continental 1650



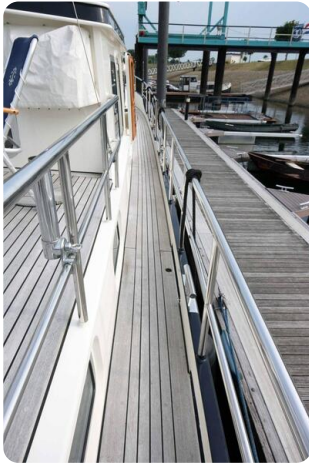
Vripack Continental 1650



Vripack Continental 1650



Vripack Continental 1650



Vripack Continental 1650



Vripack Continental 1650



Vripack Continental 1650



Vripack Continental 1650



Vripack Continental 1650



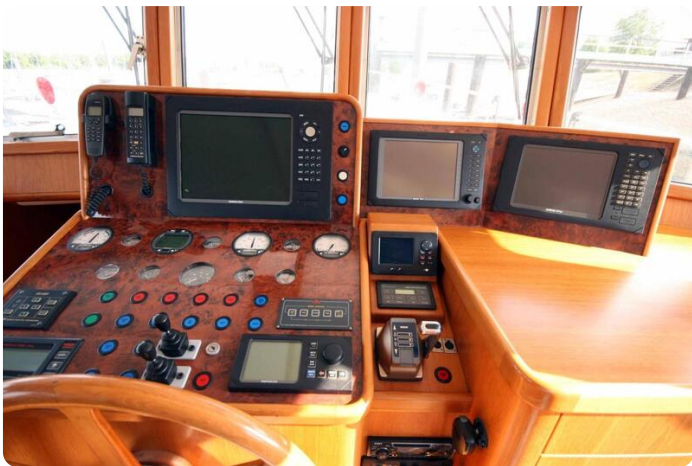
Vripack Continental 1650



Vripack Continental 1650



Vripack Continental 1650



Vripack Continental 1650



Vripack Continental 1650



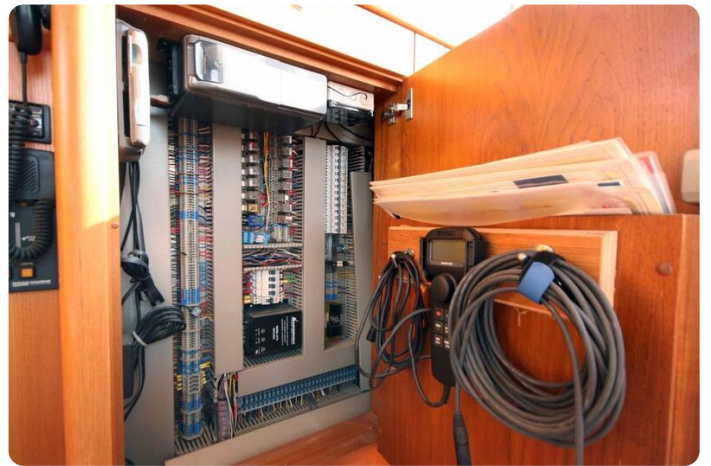
Vripack Continental 1650



Vripack Continental 1650



Vripack Continental 1650



Vripack Continental 1650



Vripack Continental 1650



Vripack Continental 1650



Vripack Continental 1650



Vripack Continental 1650



Vripack Continental 1650



Vripack Continental 1650



Vripack Continental 1650



Vripack Continental 1650



Vripack Continental 1650



Vripack Continental 1650



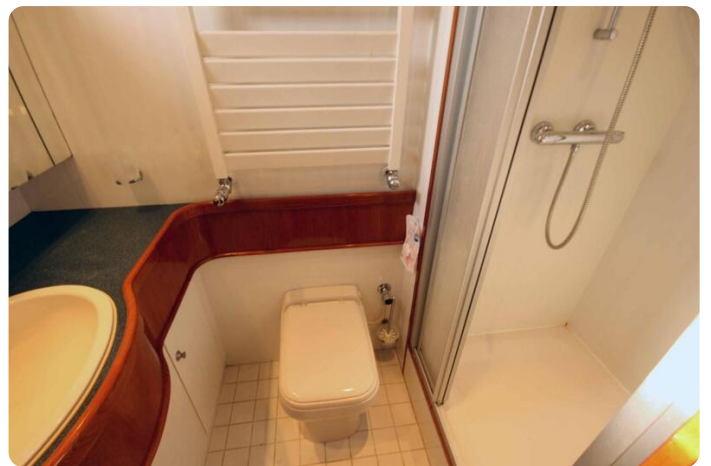
Vripack Continental 1650



Vripack Continental 1650



Vripack Continental 1650



Vripack Continental 1650



Vripack Continental 1650



Vripack Continental 1650



Vripack Continental 1650



Vripack Continental 1650



Vripack Continental 1650



Vripack Continental 1650



Vripack Continental 1650



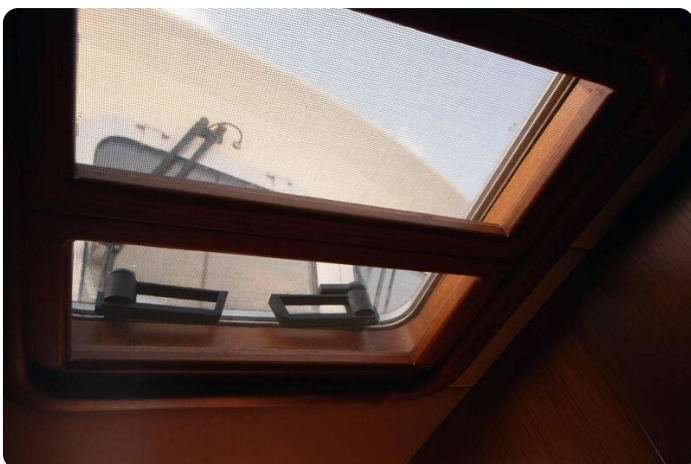
Vripack Continental 1650



Vripack Continental 1650



Vripack Continental 1650



Vripack Continental 1650



Vripack Continental 1650



Vripack Continental 1650



Vripack Continental 1650



Vripack Continental 1650



Vripack Continental 1650



Vripack Continental 1650



Vripack Continental 1650



Vripack Continental 1650



Vripack Continental 1650



Vripack Continental 1650



Vripack Continental 1650



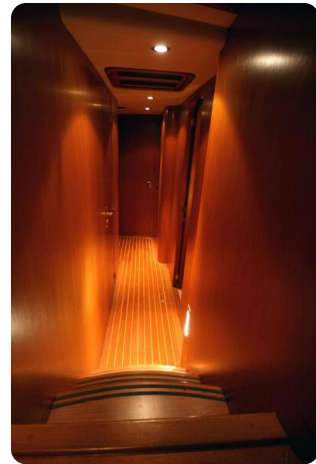
Vripack Continental 1650



Vripack Continental 1650



Vripack Continental 1650



Vripack Continental 1650



Vripack Continental 1650



Vripack Continental 1650



Vripack Continental 1650



Vripack Continental 1650



Vripack Continental 1650



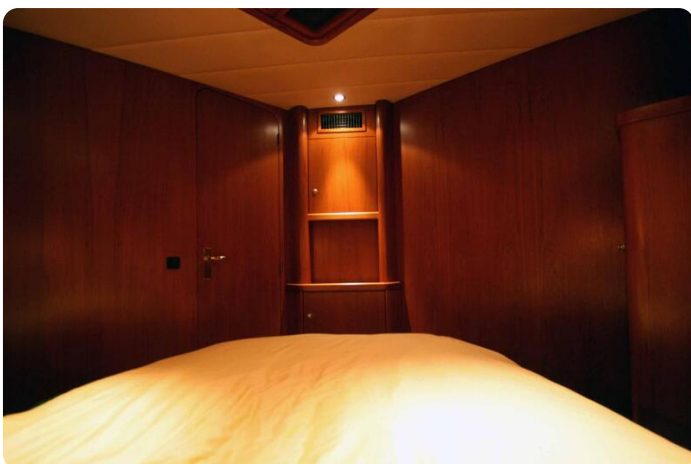
Vripack Continental 1650



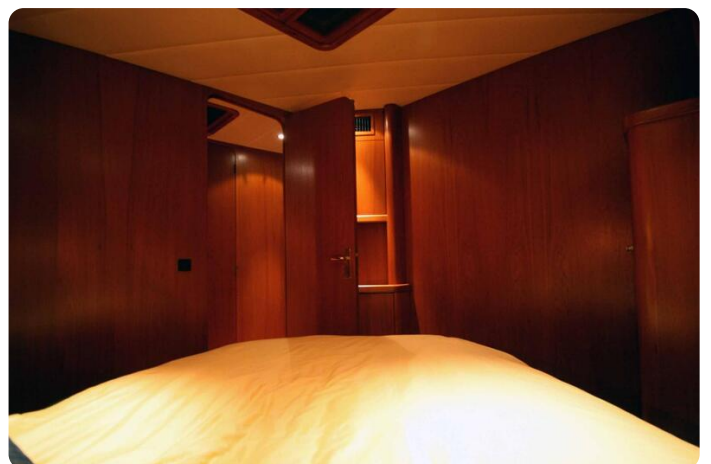
Vripack Continental 1650



Vripack Continental 1650



Vripack Continental 1650



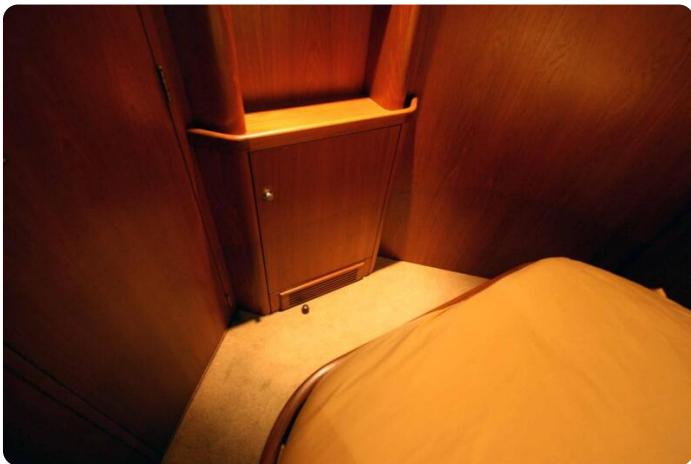
Vripack Continental 1650



Vripack Continental 1650



Vripack Continental 1650



Vripack Continental 1650



Vripack Continental 1650



Vripack Continental 1650



Vripack Continental 1650



Vripack Continental 1650



Vripack Continental 1650



Vripack Continental 1650



Vripack Continental 1650



Vripack Continental 1650



Vripack Continental 1650



Vripack Continental 1650



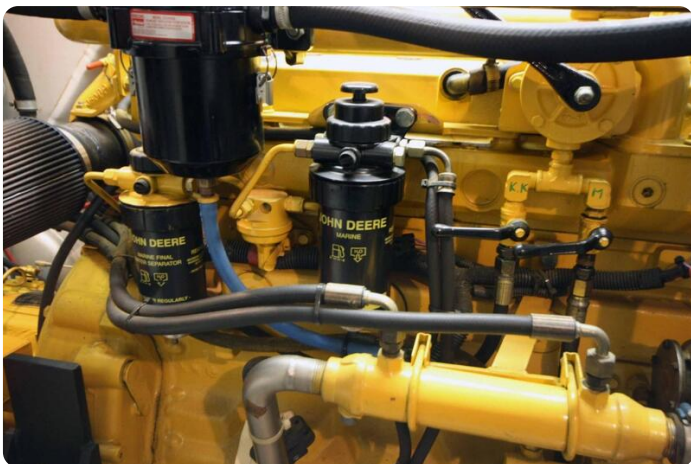
Vripack Continental 1650



Vripack Continental 1650



Vripack Continental 1650



Vripack Continental 1650



Vripack Continental 1650



Vripack Continental 1650



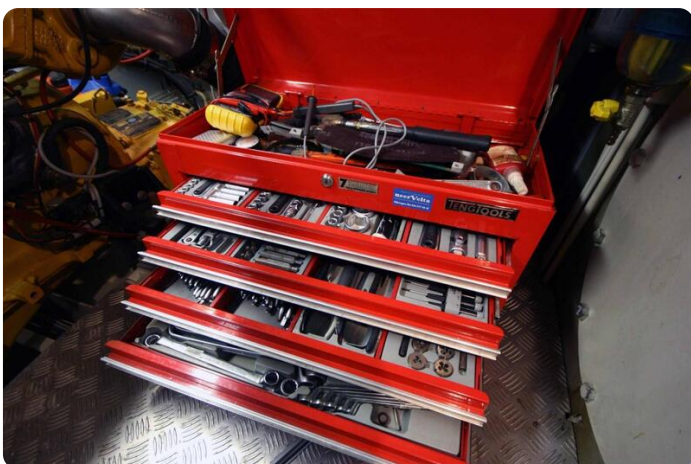
Vripack Continental 1650



Vripack Continental 1650



Vripack Continental 1650



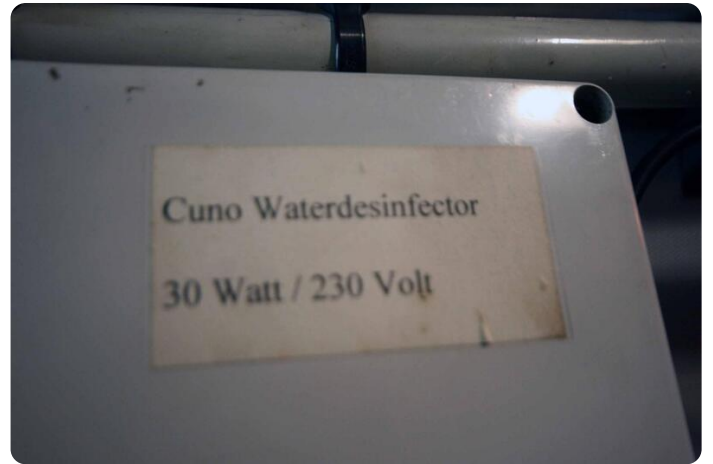
Vripack Continental 1650



Vripack Continental 1650



Vripack Continental 1650



Vripack Continental 1650



Vripack Continental 1650



Vripack Continental 1650



Vripack Continental 1650



Vripack Continental 1650



Vripack Continental 1650



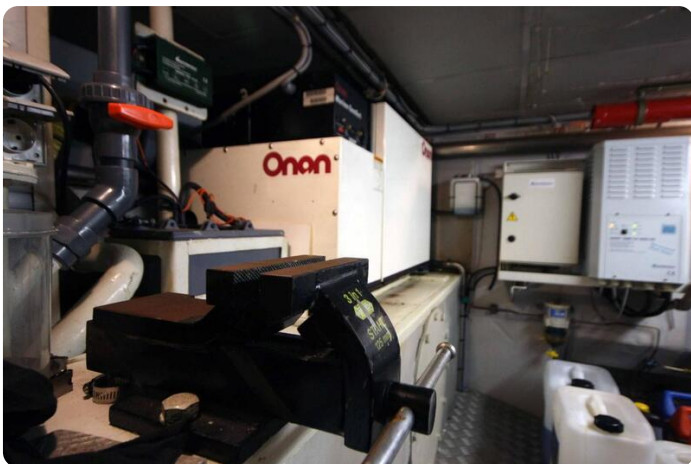
Vripack Continental 1650



Vripack Continental 1650



Vripack Continental 1650



Vripack Continental 1650



Vripack Continental 1650



Vripack Continental 1650



Vripack Continental 1650



Vripack Continental 1650



Vripack Continental 1650



Vripack Continental 1650



Vripack Continental 1650



Vripack Continental 1650



Vripack Continental 1650



Vripack Continental 1650



Vripack Continental 1650



Vripack Continental 1650



Vripack Continental 1650



Vripack Continental 1650



Vripack Continental 1650



Vripack Continental 1650



Vripack Continental 1650



Vripack Continental 1650



Vripack Continental 1650



Vripack Continental 1650



Vripack Continental 1650



Vripack Continental 1650



Vripack Continental 1650



Vripack Continental 1650



Vripack Continental 1650



Vripack Continental 1650



Vripack Continental 1650



Vripack Continental 1650



Vripack Continental 1650



Vripack Continental 1650



Vripack Continental 1650



Vripack Continental 1650



Vripack Continental 1650



Vripack Continental 1650



Vripack Continental 1650



Vripack Continental 1650



Vripack Continental 1650



Vripack Continental 1650



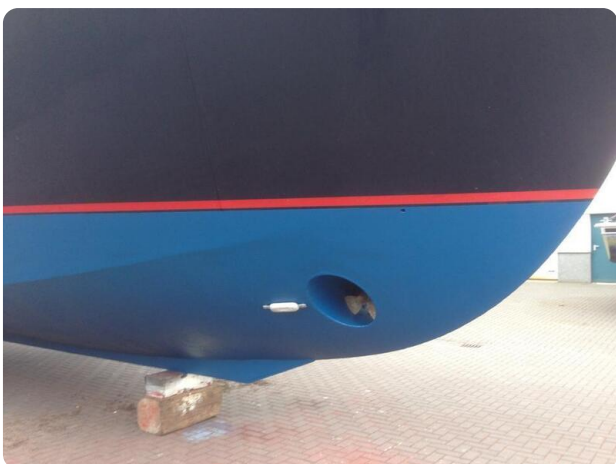
Vripack Continental 1650



Vripack Continental 1650



Vripack Continental 1650



Vripack Continental 1650

GrandYachts BV

Geijsterseweg 10
5861 BL Wanssum
Netherlands

Phone: 0031(0)478450015

<https://grandyachts.eu>



GRANDYACHTS®