



# Sealine F42

£289,950 • Lymington Reino Unido • Usado • 2011

## Presentado por

Justin Garwell  
Phone: +44 (0) 1305 766504

**JD YACHTS LIMITED**  
80 THE ESPLANADE  
DT4 7AA WEYMOUTH  
Reino Unido



## Detalles

Fabricante:	Sealine
Modelo:	F42
Año:	2011
Condición:	Usado
Motor:	Volvo Penta IPS600, 435 hp
Tipo de motor:	
Tipo de combustible:	Combustible diesel
Largo:	13.6 m (44.62 ft)
Anchura:	4.48 m (14.70 ft)
Cabañas:	0
Literas:	0



JD YACHTS  
LIMITED



7zea.com

# Descripción

ENG 2011. 2 x 435 HP Volvo Penta IPS600 5 berths in 2 cabins Lying: Lymington UK	Storage in port coaming adjacent to transom gate Port stowage locker with provision for BBQ Port stowage bin in coaming side with provision for fridge Fuel taps Stowage below flybridge steps Stowage below transom seat adjacent to gas locker Stowage bin below engine hatch Main battery isolator switch Lazarette (lockable) with access steps, light & access hatches to engineering spaces, ventilated oilskin hanging area
ENG Extras	Flybridge
NEW Flybridge Upholstery NEW Cockpit Upholstery Raymarine HybridTouch MFD GPS/Chartplotter to Upper Helm Raymarine Radome Raymarine Speed Log To Lower & Upper Helm Stations Raymarine Depth Log To Lower & Upper Helm Stations Additional 3rd Volvo Penta Joystick Docking Control located in Cockpit Generator 2 X Eberspacher Diesel Heating Fusion Stereo Holding Tank Flybridge Bimini Cockpit Griddle Cockpit Fridge 2 x 50 inch SMART TVs 2 x Additional SMART TVs	Fwd facing seating port and stbd, stbd converts to bench Storage cupboards to port mid and port aft Handrail on entrance to flybridge Table, GRP with cup holders (4) Mast, GRP and hinged Anchor & steaming light, stern light, flag hooks, VHF radio aerial, Raymarine GPS locator, TV aerial, ensign socket and staff Low level LED lighting and lighting to flybridge steps
Standard Specification	Upper Helm
Deck	Sealine steering wheel, Tilt Volvo engine instrumentation, full set Engine controls, joystick and single lever throttles Compass, side reading Speed and depth log, Raymarine ST60 (2 gauges) VHF, Ray 240 E radio 12 V DC socket Cup holders, self draining, 4 Stowage Dual helm bench seat, adjustable and converting to social seating
Anchor, Delta 20 kg with 40m of chain Anchor locker, self draining Anchor safety leash Deck moulding, non slip Fender strip, silver anodised aluminium with black rubber insert Foredeck hatch, opening Fuel and water deck fillers Navigation lights, full set Open bow pulpit and guard rails in stainless steel Windlass, reversible electric Bow cleat Spring cleats, 4 Mooring cleats, 4 Covered foot switches for windlass operation Shore power socket Low level LED lighting Scuppers both port and stbd forward of steps Large, full height screen, clear toughened glass Full glass side window to port and starboard with opening system	Saloon
Cockpit & Bathing Platform	Sideboard port side unit with storage Radio, CD (2) speakers L shaped seating to stbd Moveable seats (2 +1) to port, with storage inside Above used to convert L shaped seating to extra occasional berth Surround windows, with opening port and starboard Drop down blinds on flat side screens Spot lighting Table wooden - folding (moves to cockpit) Electronic weather station Provision for TV with storage under Sockets, double (2) 230V (AC)
Teak laid and self-draining Teak steps to flybridge with LED lighting Seating, □L□ shaped to starboard 3 Piece sliding patio door Under seat gas locker to stbd Fender stowage in transom seat Access to the lazarette under transom seat Manual bilge pumps (2) in recess Spotlighting Bathing platform, teak laid Swim ladder with flush sockets in platform Handrails in stainless steel Bathing shower with hot and cold water Transom door, hinged Access hatch to engine room, lockable with gas struts	Lower Helm
	Sealine steering wheel, Tilt Double sliding helm seat Volvo engine instrumentation, full set Engine controls, joystick and single lever throttles Armrest with stowage locker below Compass, side reading 12V DC Socket Speed and depth logs, Raymarine ST60 (2 gauges) VHF, Ray 240 E radio Chart area (Min A4) Cup holder (2 min) Storage boxes (3)
	Galley
	Large fridge with freezer with auto 12/230 V changeover Spotlighting

Lighting above eye level cupboards  
High level oven and grill, gas  
Sink, stainless with mixer tap  
Sockets, double (2) 230V (AC)  
Soft close storage cupboards at worktop level  
Soft close storage cupboards at eye level  
Stove, gas (2) burner  
Extractor fan above hob  
Under floor storage (2)  
Wooden steps to saloon with storage/bins under  
Storage under lobby floor (without waste tanks)  
Full height shelving unit in lobby

#### Master Forward Cabin

Berth, double with storage below  
Vanity storage, port and stbd  
Soft close wardrobes to port & stbd.  
Mirror on back of stbd door  
Single door to Galley  
Magnetic floor mounted door stops  
Door to shower  
Door to head  
Portlights to port (1) and stbd. (1), both opening  
Curtains  
Skylight hatch, opening with blind  
Skylight fixed, aft of opening hatch  
Sockets, single (2) (230V AC) port & stbd  
Reading light (2)  
Spotlighting  
Concealed lighting  
Soft close eye level cupboards to port and stbd  
Carpet to floor

#### Master En-suite Shower

Spotlighting  
Porthole, opening, frosted  
Shower curtain  
Handheld shower & bracket  
Towel rail & robe hook  
Shower seat  
Shelf & fiddle rail  
Extraction  
Non slip GRP

#### Master En-suite Head

Cup, toilet roll holders  
Toilet brush & holder  
Hand basin with mixer tap  
Spotlighting  
Vanity unit above sink with mirror  
Frosted portlight, opening  
Shaver socket  
Storage cupboard, low level  
Toilet, Electric Quiet Flush  
Towel rail & robe hook  
Shelf & fiddle rail  
Blind  
Non slip GRP floor

#### Mid Cabin

Berth, with slide conversion from double to 2 singles  
Storage under front of bed  
3rd berth to stbd  
Low level locker under step  
Soft close full height wardrobe to stbd  
Soft close full height shelving unit to stbd  
Amidships locker unit & shelf  
Door (with obscured gazing) to Galley  
Closure of cabin to en-suite to create day head/shower  
Door to en-suite bathroom  
Large bonded windows to port and stbd , with inset opening  
Blinds

Reading Lights (3)  
Spotlighting  
Sockets, single (2) (230V AC) port & stbd  
Escape hatch to saloon

#### En-suite Bathroom To Mid Cabin / Day Head

Cup & toilet roll holder  
Toilet brush & holder  
Hand basin with mixer tap  
Mirror with vanity unit behind  
Storage in aft bulkhead  
Frosted portlight, opening  
Extraction  
Blind  
Shaver socket  
Separate stall shower with glass door  
Handheld shower & bracket  
Storage cupboard, low level  
Towel rail & robe hook  
Toilet, electric quiet flush  
Spotlighting  
Non slip GRP floor  
Skylight to saloon

#### Mechanical

Water tank, capacity □ 450 litres  
Bilge pumps, automatic electric (2) and manual (2)  
Engine room sound proofing  
Engine room fans (automatic)  
Engine room lights  
Fire extinguisher system, automatic and manual, in engine room with controls at both helms  
Fuel tanks, 600 litres ea. (2)  
Fuel filters for engines  
Steering, Electric  
Screen demisters running from engines (maintains clear screen only)

#### Electrical

AC system, 230V with shore support system  
Batteries - domestic and stbd engine 4 x 105 Ah  
Batteries - port engine 2 x 105 Ah with link switch  
Batteries - Bow 1 x 105 Ah  
Battery charger, 40 amp  
Calorifier with immersion heater (55 litre)  
DC system, 12V system  
Fresh water pump  
Water tank gauge  
Shore power cable  
Pantograph wipers, dual speed  
Screen wash on both wipers

#### Decor

Walnut furniture  
Flooring walnut, galley and lower helm  
Flooring carpet, saloon and cabins  
Upholstery interior - Linara fabric  
Mattresses - split foam hi-comfort  
Solid core matt black work surface in galley  
Solid core matt black work surface in master and mid cabin en-suite heads

#### Canopies

Rear canopy 3 piece, with detachable sides including zipped access door and clear flexible windows  
Rear canopy clamshell with easy drop down functionality  
Two piece side canopies with roll up door section  
Windscreen cover, PVC white  
Lightweight flybridge tonneau cover with restraint system

Información general

Fabricante:	Sealine
Modelo:	F42
Año:	2011
Condición:	Usado

Motor

Motor:	Volvo Penta IPS600, 435 hp
Tipo de motor:	
Tipo de combustible:	Combustible diesel

Mediciones

Largo:	13.6 m (44.62 ft)
Anchura:	4.48 m (14.70 ft)
Profundo:	1.15 m (3.77 ft)
Peso:	12900 ( )

Alojamiento

Cabañas:	0
Literas:	0

Imágenes



Image courtesy of JD Yachts



Image courtesy of JD Yachts





Image courtesy of JD Yachts



Image courtesy of JD Yachts



Image courtesy of JD Yachts



Image courtesy of JD Yachts



Image courtesy of JD Yachts



Image courtesy of JD Yachts





Image courtesy of JD Yachts



Image courtesy of JD Yachts



Image courtesy of JD Yachts



Image courtesy of JD Yachts



Image courtesy of JD Yachts



Image courtesy of JD Yachts





Image courtesy of JD Yachts



Image courtesy of JD Yachts



Image courtesy of JD Yachts



Image courtesy of JD Yachts



Image courtesy of JD Yachts



Image courtesy of JD Yachts





Image courtesy of JD Yachts



Image courtesy of JD Yachts



Image courtesy of JD Yachts



Image courtesy of JD Yachts



Image courtesy of JD Yachts



Image courtesy of JD Yachts





Image courtesy of JD Yachts



Image courtesy of JD Yachts



Image courtesy of JD Yachts



Image courtesy of JD Yachts



Image courtesy of JD Yachts

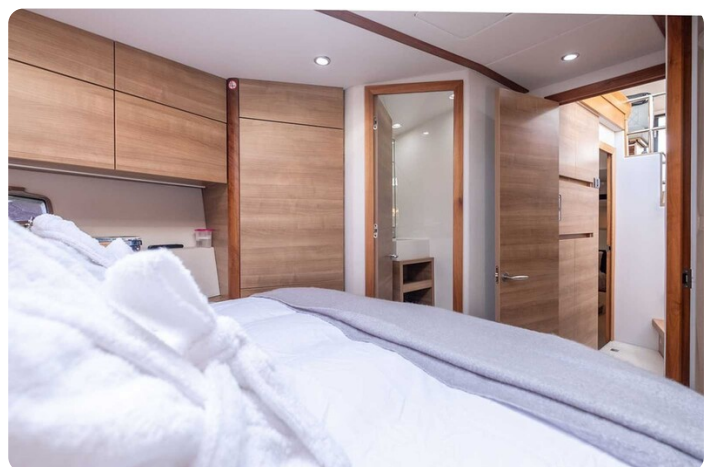


Image courtesy of JD Yachts



Image courtesy of JD Yachts



Image courtesy of JD Yachts



Image courtesy of JD Yachts



Image courtesy of JD Yachts



Image courtesy of JD Yachts

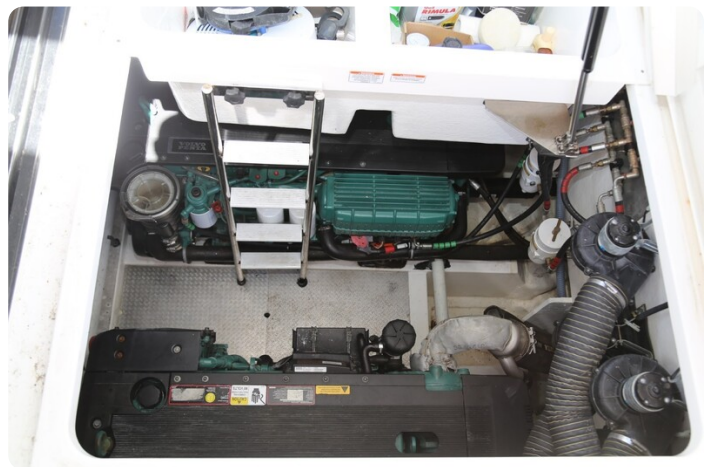


Image courtesy of JD Yachts





Image courtesy of JD Yachts



Image courtesy of JD Yachts



Image courtesy of JD Yachts



Image courtesy of JD Yachts



Image courtesy of JD Yachts



Image courtesy of JD Yachts



Image courtesy of JD Yachts



Image courtesy of JD Yachts



**JD YACHTS LIMITED**

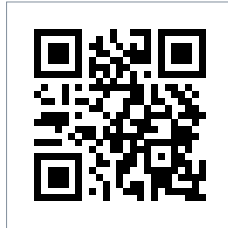
80 THE ESPLANADE

DT4 7AA WEYMOUTH

Reino Unido

Teléfono: +44 (0) 1305 766504

<http://jdyachts.com>



 YACHTS.