



# Princess V48

€670,500 • North Jutland Denmark • Used • 2014

## Presented by

Justin Garwell  
Phone: +44 (0) 1305 766504

### JD YACHTS LIMITED

80 THE ESPLANADE  
DT4 7AA WEYMOUTH  
United Kingdom (UK)

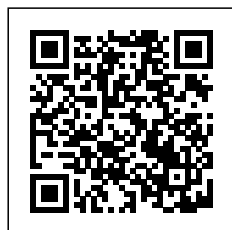


## Details

Make:	Princess
Model:	V48
Year:	2014
Condition:	Used
Engine:	Volvo IPS 600, 435 hp
Engine type:	
Fuel type:	Diesel
Length:	15.58 m (51.12 ft)
Beam:	4.11 m (13.48 ft)
Cabins:	0
Berths:	0



JD YACHTS  
LIMITED



7zea.com

# Description

ENG  
2014. 2 x 435 HP Volvo IPS 600  
4 berths in 2 cabins  
Lying: North Jutland Denmark

ENG  
Extras

Eberspacher M10 Heating System Throughout  
Onan 11kw Generator  
Hi-Lo Bathing Platform  
IPS Joystick Control  
Side-Power Bow Thruster  
Teak Laid Bathing Platform  
Teak Laid Cockpit  
Raymarine HybridTouch 15.4" Colour Multifunction Display  
Raymarine Autopilot  
Cockpit Sun Awning with complete Full Height Cockpit Cover  
Upper Saloon - LED TV on Rise & Fall System  
Lower Saloon - 28" LED TV  
Owners Stateroom - 28" LED TV  
Forward Guest Cabin - 22" LED TV  
Scissor Berths in Guest Cabin  
Combi Oven  
Dishwasher  
Cockpit Wetbar with Grill

Standard Specification

Standard Equipment

Power-assisted steering system  
Volvo joystick manoeuvring control  
24v DC/240v AC electrical system  
240v shore power with 40-amp float battery charger  
Remote control electric anchor winch  
Electro-hydraulic trim tabs  
VHF with DSC R/T  
Speed and distance log  
Echo sounder with alarm  
Remote control searchlight  
Combination microwave/conventional oven/grill  
Refrigerator with deep freeze compartment  
Electric quietflush toilets  
Saloon and cockpit stereo CD/radio  
Teak-laid transom platform/cockpit deck/stairs to side decks

Deck Fittings

Reversible electric anchor winch with foredeck and helm position controls  
Self-stowing 20kg/44lb Delta anchor with 40m chain  
Stemhead roller with automatic anchor launch and retrieve  
Stainless-steel bow, stern and spring cleats  
Stainless-steel pulpit and guard rails  
Stainless-steel coachroof handrails  
Foredeck hatch with integrated skylight  
PVC rubbing band with stainless-steel insert  
Full set of IMCO navigation lights  
Riding light  
Remote control searchlight  
Twin electric horns  
Fuel and water fillers

Cockpit

Self-draining  
U-shaped seating/dining area  
Teak table

Overhead and low level courtesy lights  
Tonneau cover  
Stainless-steel grabrails  
Transom hatch to stern lazarette  
Access hatch to engine room  
220/240v shore support inlet in locker  
Life raft locker  
Transom platform with integrated swimming ladder (with optional electro-hydraulic raise/lower mechanism)  
Twin transom doors  
Hot and cold shower  
Locker for 2 gas bottles  
Storage lockers

Helm Position

Helm seat with sit/stand facility  
Full engine instrumentation  
Fuel gauges  
Single-lever engine controls  
Joystick maneuvering control  
Rudder position indicator  
Power-assisted steering system and adjustable steering wheel  
Remote control anchor winch  
Trim tab controls with indicators  
VHF with DSC R/T  
Speed and distance log  
Echo sounder with alarm  
Remote control searchlight  
High speed compass  
Horn button  
Chart area  
Twin windscreen wipers  
Windscreen freshwater pressure wash  
Bilge pump controls with visual "pump running" indicator (3)  
Electric side window

Upper Saloon

U-shaped sofa  
Dining table  
Cocktail cabinet  
Refrigerator  
Overhead downlighters  
Electric opening roof  
Triple stainless-steel framed sliding doors to cockpit  
Radio/CD/MP3 with saloon and cockpit speakers  
Timber-laid flooring

Lower Saloon

L-shaped sofa  
Table  
Storage lockers  
Overhead downlighters  
Main electrical control panel with battery isolation switches  
Opening portlights (2)

Galley

Avonite (or similar) worktop  
3 zone gas hob with flame failure device (optional 3 ring ceramic hob)  
Stainless-steel sink with Monobloc mixer tap  
Combination microwave/conventional oven with grill  
Refrigerator with freezer compartment  
Waste bin  
Storage cupboards, drawers and lockers  
Timber-laid flooring  
Under floor storage bin  
Opening portlights

#### Owners Stateroom

Large double bed with drawers below  
Wardrobe with shelves  
Drawers and storage lockers  
Overhead and individual berth lights  
Sofa  
Dressing table  
Panoramic trapezoidal windows in toughened glass with opening ports  
En-suite bathroom:  
Avonite worktop  
Wash basin with Monobloc mixer tap  
Separate stall shower with extractor  
Mirror  
Storage locker  
Opening portlight

#### Forward Guest Cabin

Large double bed with drawers below (option of scissor berths)  
Wardrobe  
Deck hatch with integrated fly screen and blind  
Storage lockers  
Downlighters and individual berth lights  
Trapezoidal side windows with opening ports  
En-suite bathroom:  
Wash basin with Monobloc mixer tap  
Separate stall shower with extractor  
Mirror  
Storage locker  
Opening portlight

#### Power And Drive Systems

Twin Volvo IPS-600  
Power-assisted steering  
Electronic engine controls  
Joystick manoeuvring system  
Volvo active corrosion protection system  
Engine room extractor fans with electronic time delay  
Trim tabs with indicators  
Engine room lighting

#### Electrical Systems

24 Volt:  
4 x heavy-duty batteries for engine starting  
4 x heavy-duty auxiliary batteries  
Engine alternators charge via split charge relays to isolate engine start batteries from auxiliaries  
40-amp 24v float battery charger  
Battery paralleling system (for engine start back-up)  
Remote battery master switches with control switch at main panel  
Circuit breakers on all circuits  
220/240 Volt:  
Shore support inlet (32A)  
Power points in owner's stateroom, forward guest cabin, galley (double), lower and upper saloon  
Polarity check system  
Earth leakage safety trip  
Shaver points in both bathrooms

#### Fuel System

Twin fuel tanks (in NS8 marine grade alloy) with interconnection system giving 265 gallons/318 US gallons/1,200 litres capacity  
Fuel fillers on both side decks  
High-capacity fuel filter/water trap  
Remote fuel cocks in cockpit locker  
Fuel gauges on helm console

#### Water System

Water capacity totalling 80 gallons/96 US gallons/364 litres including 11 gallon/13 US gallon/50 litres hot water calorifier  
Water heated by engine and 240v immersion heater  
Automatic water pump with filter  
Main circuit breaker at switch panel  
Water level gauge  
Deck filler

#### Fire Extinguishers

Automatic fire extinguisher in engine room and generator space

#### Bilge Pumps

Automatic electric bilge pumps with manual override (3 in all)  
High-capacity manual bilge pump with valve system and suction points in engine room and accommodation space

### General information

Make:	Princess
Model:	V48
Year:	2014
Condition:	Used

### Engine

Engine:	Volvo IPS 600, 435 hp
Engine type:	
Fuel type:	Diesel

### Measurements

Length:	15.58 m (51.12 ft)
Beam:	4.11 m (13.48 ft)
Deep:	1.14 m (3.74 ft)
Weight:	14300 ( )

### Accommodation

Cabins:	0
Berths:	0





Image courtesy of JD Yachts



Image courtesy of JD Yachts



Image courtesy of JD Yachts



Image courtesy of JD Yachts



Image courtesy of JD Yachts



Image courtesy of JD Yachts





Image courtesy of JD Yachts



Image courtesy of JD Yachts



Image courtesy of JD Yachts



Image courtesy of JD Yachts



Image courtesy of JD Yachts



Image courtesy of JD Yachts





Image courtesy of JD Yachts



Image courtesy of JD Yachts



Image courtesy of JD Yachts



Image courtesy of JD Yachts



Image courtesy of JD Yachts



Image courtesy of JD Yachts





Image courtesy of JD Yachts



Image courtesy of JD Yachts



Image courtesy of JD Yachts



Image courtesy of JD Yachts

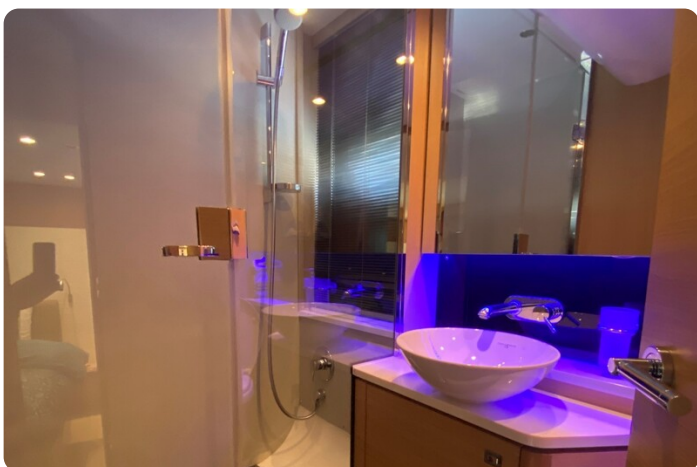


Image courtesy of JD Yachts



Image courtesy of JD Yachts





Image courtesy of JD Yachts



Image courtesy of JD Yachts



Image courtesy of JD Yachts



Image courtesy of JD Yachts



Image courtesy of JD Yachts



Image courtesy of JD Yachts



**JD YACHTS LIMITED**

80 THE ESPLANADE

DT4 7AA WEYMOUTH

United Kingdom (UK)

Phone: +44 (0) 1305 766504

<http://jdyachts.com>



 YACHTS.