



# Jeanneau Merry Fisher 605

£35,995 • Brightlingsea United Kingdom (UK) • Used • 2018

## Presented by

Peter Marchant  
Phone: 44(0)1206302003

**Morgan Marine**  
The Boatyard, Shipyard  
Estate  
CO7 0AR Colchester  
United Kingdom (UK)



## Details

|              |                   |
|--------------|-------------------|
| Make:        | Jeanneau          |
| Model:       | Merry Fisher 605  |
| Year:        | 2018              |
| Condition:   | Used              |
| Engine:      | , 300 hp          |
| Engine type: |                   |
| Fuel type:   | Gasoline          |
| Length:      | 5.79 m (19.00 ft) |
| Beam:        | 2.46 m (8.07 ft)  |
| Cabins:      | 0                 |
| Berths:      | 0                 |



Morgan Marine



7zea.com

# Description

EN

Just arrived at Morgan Marine - a 2018 lightly used Jeanneau Merry Fisher 605, powered by a dependable Honda BF100 LRTU outboard with just 123 hours on the clock. Designed for those who want to experience the pleasures of coastal cruising, this versatile and stylish boat has been well cared for by its current owner and is packed with premium features. Step aboard and enjoy the flexibility of a cockpit sun mattress conversion, ideal for relaxing on sunny days. Anglers will appreciate the fitted rod holders, while overnight trips are made comfortable with a spacious double berth in the cabin and unused chemical toilet. The galley is fully equipped with a sink, cooker, fridge, and everything you need for weekends on the water. Navigation and fish finding are effortless thanks to a comprehensive Lowrance electronics package, including the Elite-7 chart plotter and HDI transducer. This boat also comes with an SBS 4-wheel roller R4/2600B trailer, making it perfect for Morgan Marine's Park and Ride service. A standout example of the popular Merry Fisher 605! - Early viewing is highly recommended. Don't miss the opportunity to make this fantastic boat your own!

Cabin: Double berth in cabin + roof hatch. Chemical toilet (never used). Wheelhouse convertible into double berth. Wheelhouse interior curtains. Table, seats and cushions (lockers under seats) in wheelhouse. Galley with sink, (manual pressurised water), gas cooker, and 42L fridge.

Cockpit: Wheelhouse with port and starboard sliding windows, aft transparent sliding door and opening roof hatch. Pilot bolster seat. Front of sea co-pilot bench. Dash with engine instrumentation and compass. Glass windscreen with port and starboard electric windscreen wipers.

Electronics: Lowrance Electronic Pack - Lowrance Combo Elite-7 chart plotter. Lowrance HDI transducer. Lowrance Link 8 VHF radio. 220v shore power socket + battery charger. Navigation lights. Manual and electric bilge pump. Saloon overhead lights.

Machinery: Honda BF100 LRTU outboard with power trim and tilt. Mechanical steering. Fuel capacity: 100L - outside fill. Water capacity: 20L.

Trailer: SBS 4 wheel roller R4/2600B trailer with jockey wheel, winch and hitch.

## General information

|            |                  |
|------------|------------------|
| Make:      | Jeanneau         |
| Model:     | Merry Fisher 605 |
| Year:      | 2018             |
| Condition: | Used             |

## Engine

|              |          |
|--------------|----------|
| Engine:      | , 300 hp |
| Engine type: |          |
| Fuel type:   | Gasoline |

## Measurements

|         |                   |
|---------|-------------------|
| Length: | 5.79 m (19.00 ft) |
| Beam:   | 2.46 m (8.07 ft)  |
| Deep:   | 0.43 m (1.41 ft)  |

## Accommodation

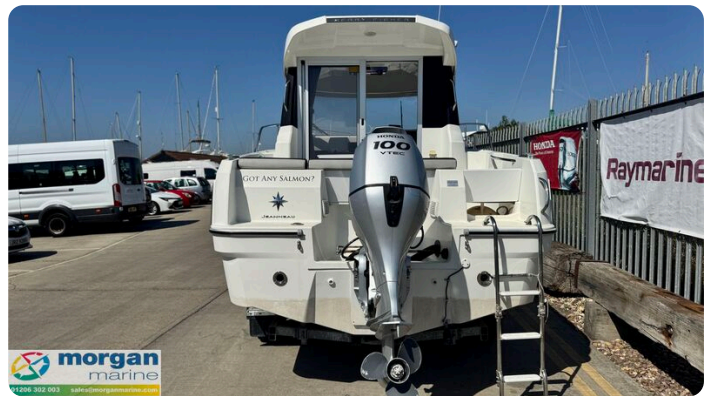
|         |   |
|---------|---|
| Cabins: | 0 |
| Berths: | 0 |



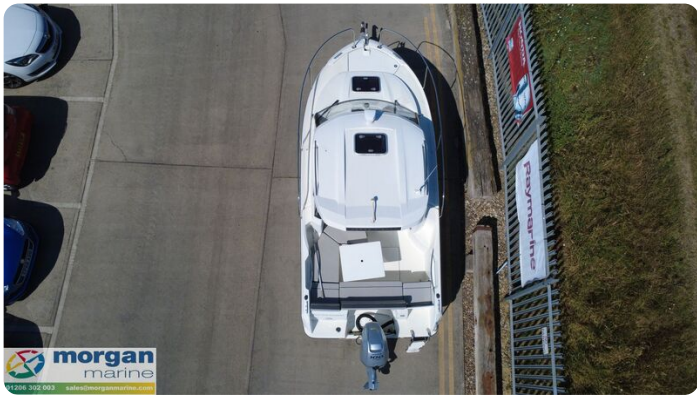
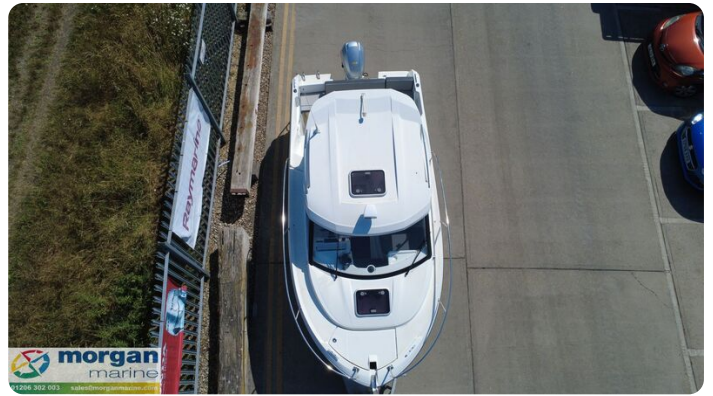
# Images



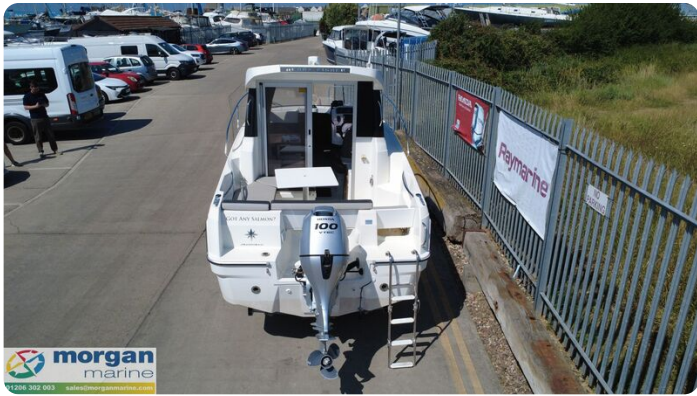








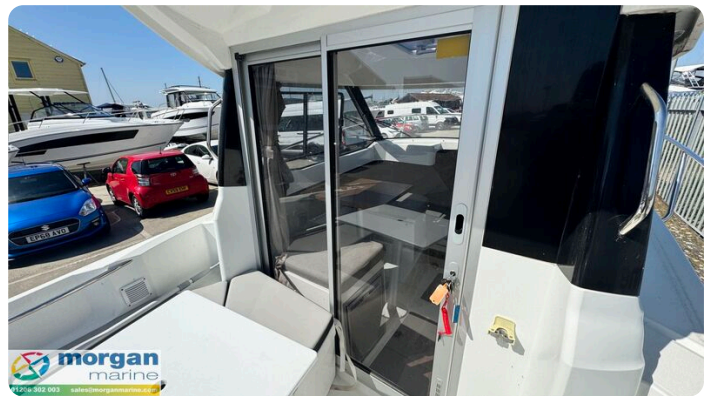




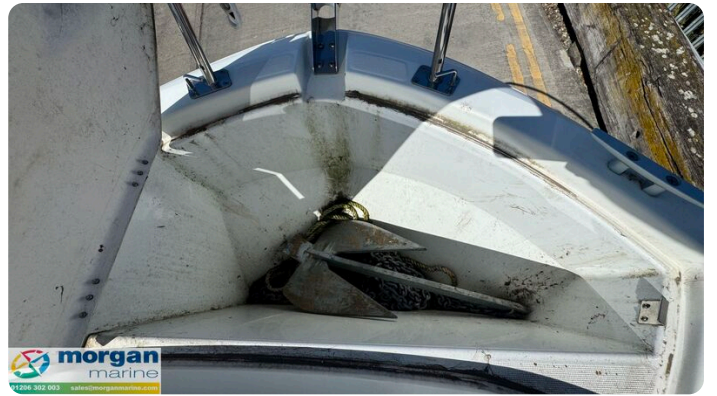












**Morgan Marine**

The Boatyard, Shipyard Estate  
CO7 0AR Colchester  
United Kingdom (UK)

Phone: 44(0)1206302003

<https://morganmarine.com>

