



# Jeanneau Cap Camarat 5.5 WA

£31,995 • Brightlingsea United Kingdom (UK) • Used • 2022

## Presented by

Peter Marchant  
Phone: 44(0)1206302003

## Morgan Marine

The Boatyard, Shipyard  
Estate  
CO7 0AR Colchester  
United Kingdom (UK)

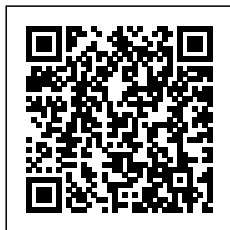


## Details

Make:	Jeanneau
Model:	Cap Camarat 5.5 WA
Year:	2022
Condition:	Used
Engine type:	
Fuel type:	Gasoline
Length:	5.48 m (17.98 ft)
Beam:	2.34 m (7.68 ft)
Cabins:	0
Berths:	0



Morgan Marine



7zea.com

# Description

EN  
2022 Jeanneau Cap Camarat 5.5 with the ultimate spec- In our opinion this is most probably the best used Cap Camarat 5.5 WA on the market - offering a large reduction in price compared to buying a brand new boat. Fully equipped with the roaring Yamaha F115 BETL outboard and De Graaff SB1500-2 Swing beam roller braked trailer. Excellent specification including Trim Level Premiere (cockpit cushions with table and rod holders, bimini with aluminium frame, front sundeck mattress, Garmin chartplotter, Fusion RA-210 audio with DAB upgrade and double berth cuddy. A lovely boat equipped with everything you need to hit the water running - Reaching max speed circa 35 knots, and a cruising speed 24 knots! Perfect for day trips with the family and great for our Park and Ride service.

Deck: Anchoring kit (anchor and rope) in self draining anchor locker. Bimini with aluminium frame. Ski mast. Front sun deck mattress. Boarding ladder. 2x rod holders. Mooring cleats. Stainless steel pulpit. Deck locker. Navy blue hull. CE category C for 6. Console cover. Pilot and co-pilot seat covers. Bow roller.

Cabin: Double cuddy with translucent sliding door and double berth complement.

Cockpit: Console with mini windscreen and handrail + steering wheel, engine controls and gauges. Pilot and co-pilot adjustable bolster seats. Aft sliding bench seat with removable cushions, backrest and table. Compass.

Electronics: Garmin chartplotter 2022. Fusion MS-RA210 speakers and DAB kit. 2x Yamaha engine digital gauge. Navigation lights.

Machinery: Yamaha F115 BETL outboard with power trim and tilt. Mechanical steering. Manual and electric bilge pump. Fuel capacity: 100L.

Trailer: De Graaff SB1500-2 Swing beam roller braked trailer with jockey wheel, winch and hitch. NB - the road trailer may not be in serviceable road worthy condition. It is recommended the buyer should inspect and service accordingly prior to use on public roads.

## General information

Make:	Jeanneau
Model:	Cap Camarat 5.5 WA
Year:	2022
Condition:	Used

## Engine

Engine type:	
Fuel type:	Gasoline

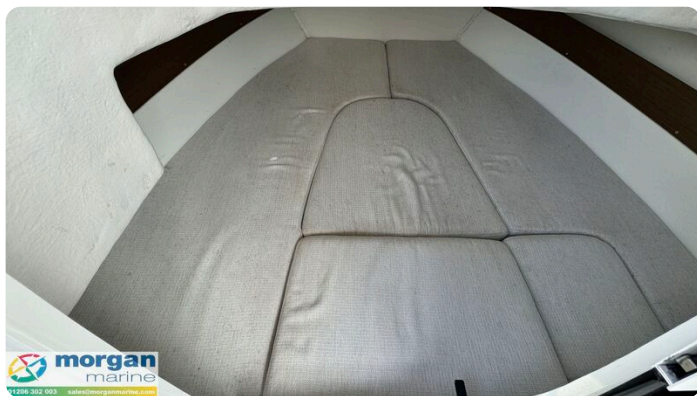
## Measurements

Length:	5.48 m (17.98 ft)
Beam:	2.34 m (7.68 ft)
Deep:	0.45 m (1.48 ft)
Weight:	0 ()

## Accommodation

Cabins:	0
Berths:	0

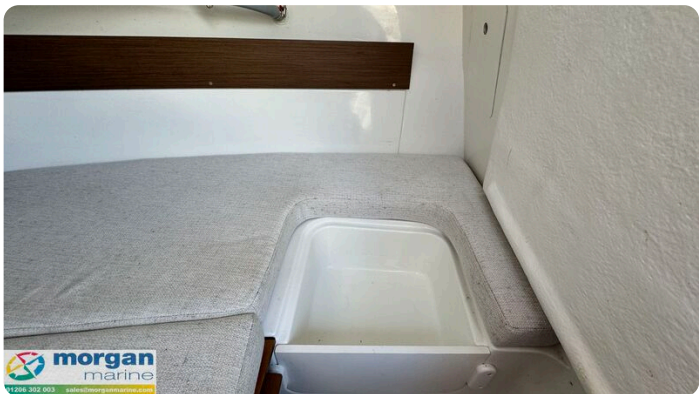


























**Morgan Marine**

The Boatyard, Shipyard Estate  
CO7 0AR Colchester  
United Kingdom (UK)

Phone: 44(0)1206302003

<https://morganmarine.com>

