



Jeanneau Cap Camarat 5.5 Centre Console Series 2

£19,995 • Brightlingsea United Kingdom (UK) • Used • 2017

Presented by

Peter Marchant
Phone: 44(0)1206302003

Morgan Marine

The Boatyard, Shipyard
Estate
CO7 0AR Colchester
United Kingdom (UK)



Details

| | |
|--------------|---|
| Make: | Jeanneau |
| Model: | Cap Camarat 5.5 Centre Console Series 2 |
| Year: | 2017 |
| Condition: | Used |
| Engine: | , 300 hp |
| Engine type: | |
| Fuel type: | Gasoline |
| Length: | 5.48 m (17.98 ft) |
| Beam: | 2.36 m (7.74 ft) |
| Cabins: | 0 |
| Berths: | 0 |



Morgan Marine



7zea.com

Description

EN

This super 2017 Jeanneau Cap Camarat 5.5 Centre Console Series 2, originally supplied by us new and owned by just two owners, was first registered in 2018. Powered by a reliable Honda BF100 outboard with approximately 149 hours, it offers outstanding versatility for relaxed cruising, water sports, sunbathing, entertaining, and effortless beaching. The centre-console layout provides unrestricted movement from bow to stern on both the port and starboard sides, while the console cuddy and additional storage compartments offer impressive space for gear and equipment. The boat comes complete with full bow sunbathing cushions, table, individual seats and console covers, a full overall cover, a Bimini, and useful extras including a Lowrance chartplotter. Well presented and attractively presented, this is a fantastic opportunity. Early viewing is strongly recommended.

Cabin: Large storage area. Open bow sun deck with cushions, removable table and infill sunbed cushion.

Cockpit: GRP console with folding door to console cuddy storage area . Dash with engine controls, steering wheel, navigation electronics and compass. Pilot and co-pilot adjustable bolster seats. Console bow seating with removable cushion. Aft cockpit sliding bench with cushions and backrest.

Electronics: Lowrance chartplotter. Fuel, RPM and trim/tilt gauges. Nav lights.

Machinery: Honda BF100 outboard engine with power trim and tilt. Bilge pump. Fuel capacity: 100L - with outside fill.

Trailer: Launch trolley available to hire for use on Morgan Marine Park & Ride. Alternatively, we can supply a new trailer to suit this boat - contact us for details.

General information

| | |
|------------|---|
| Make: | Jeanneau |
| Model: | Cap Camarat 5.5 Centre Console Series 2 |
| Year: | 2017 |
| Condition: | Used |

Engine

| | |
|--------------|----------|
| Engine: | , 300 hp |
| Engine type: | |
| Fuel type: | Gasoline |

Measurements

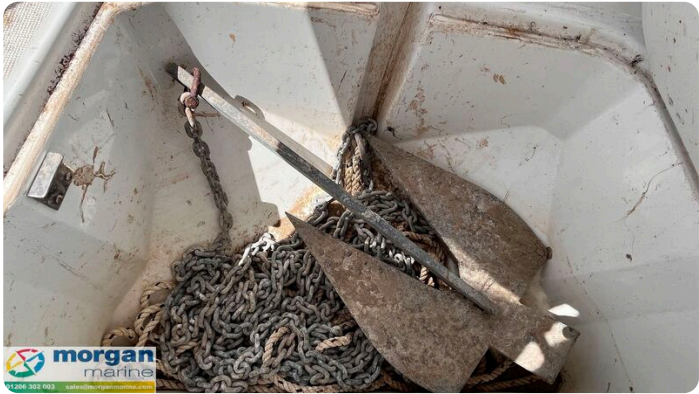
| | |
|---------|-------------------|
| Length: | 5.48 m (17.98 ft) |
| Beam: | 2.36 m (7.74 ft) |
| Deep: | 0.45 m (1.48 ft) |

Accommodation

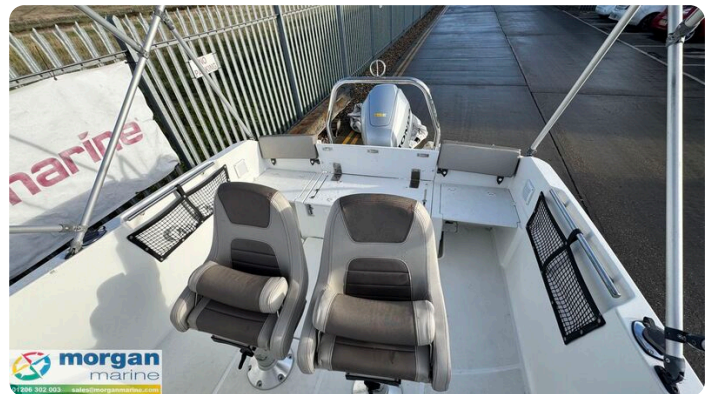
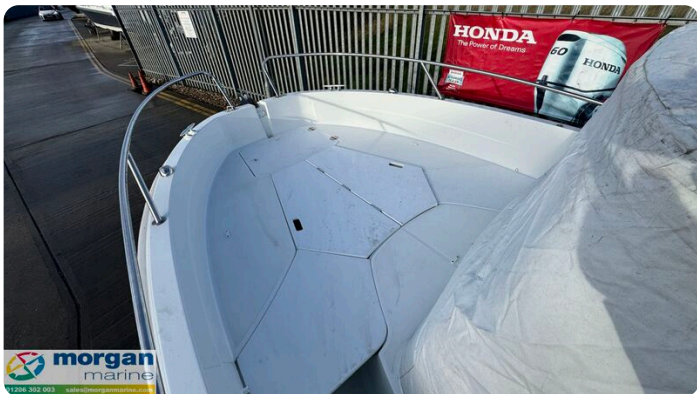
| | |
|---------|---|
| Cabins: | 0 |
| Berths: | 0 |

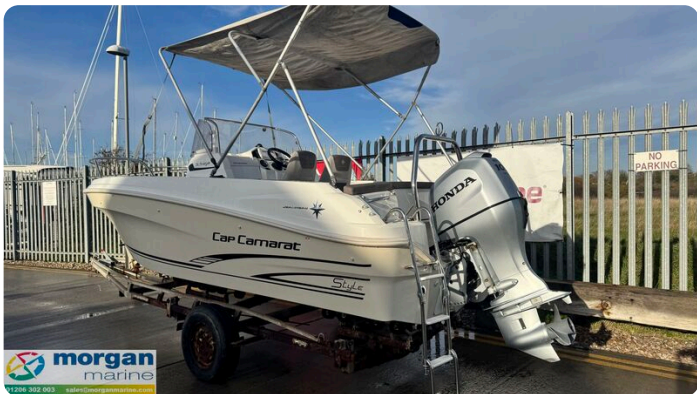
Images













Morgan Marine

The Boatyard, Shipyard Estate
CO7 0AR Colchester
United Kingdom (UK)

Phone: 44(0)1206302003

<https://morganmarine.com>

