



# Freeward 30

£34,995 • Essex United Kingdom (UK) • Used • 0

### Presented by

Peter Marchant  
Phone: 44(0)1206302003

**Morgan Marine**  
The Boatyard, Shipyard  
Estate  
CO7 0AR Colchester  
United Kingdom (UK)

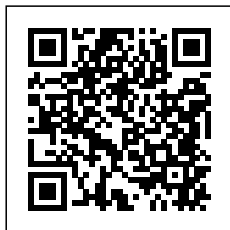


### Details

Make:	Freeward
Model:	30
Year:	0
Condition:	Used
Engine type:	
Length:	9.14 m (29.99 ft)
Beam:	2.74 m (8.99 ft)
Cabins:	0
Berths:	0



Morgan Marine



7zea.com

# Description

EN

This beautifully refurbished Freeward 30 just in at Morgan Marine which is a true standout, powered by a 2024 Beta 90hp inboard diesel engine with just 74 hours of use. Designed with ample cockpit space and easy bow access, she's ideal for comfortable and practical days on the water. The GRP hull is complemented by high-quality wood trim, offering both durability and charm—perfect for fishing trips with family and friends.

Step inside to find a fully equipped galley featuring a hob, sink, fridge, and a separate toilet with shower head,"", providing all the essentials for extended outings. Restored by a vendor well-known to Morgan Marine for their exceptional craftsmanship, this boat is finished to a good standard. Equipped with a comprehensive suite of electronics, including a Lewmar electric windlass, Humminbird Helix 9 fish finder, Cobra VHF radio, and a 1.9kW petrol generator, she's ready for action from day one. Early viewing is highly recommended - this is a rare opportunity to own a classic vessel that blends timeless design with modern reliability.

Deck: Lewmar electric windlass with anchor, chain and rope. Net hauler. Mooring bollard cleats. Mooring lines and fenders. Pulpit. Side rails, grab handles and guard lines. Wooden keel band. Large open cockpit area. 10ft GRP dinghy included in sale.

Cabin: Left side bench style seating with sea toilet + sink with hot and cold shower. Deck hatch.

Cockpit: Helm position on deck with steering wheel and engine controls. Wheelhouse with good visibility and full helm position with ships wheel, engine controls + gauges, adjustable seat and compass. Wood trim and accents. Galley in wheelhouse with cooker (hob and grill) plus fridge. Clock and barometer.

Electronics: Humminbird Helix 9 fish finder. Cobra VHF radio. 1.9kw Petrol generator. Anchor light. Navigation lights. Running lights. Windscreen wiper. Automatic bilge pump. Switch panel. Battery isolator switch.

Machinery: 2024 Beta 90hp inboard diesel engine with only approx 74 hours. Vetus bow thruster. Deck locker with ladder down to engine compartment.

## General information

Make:	Freeward
Model:	30
Year:	0
Condition:	Used
Engine type:	

## Measurements

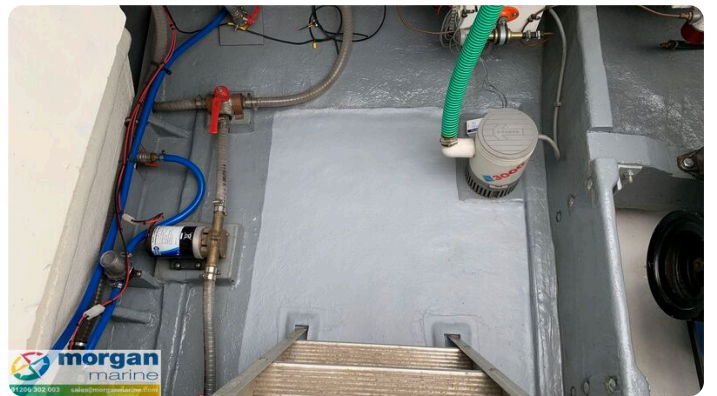
Length:	9.14 m (29.99 ft)
Beam:	2.74 m (8.99 ft)
Deep:	1.22 m (4.00 ft)
Weight:	0 ( )

## Accommodation

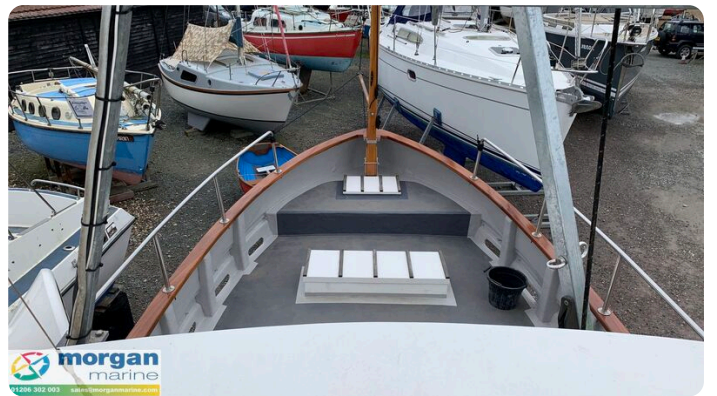
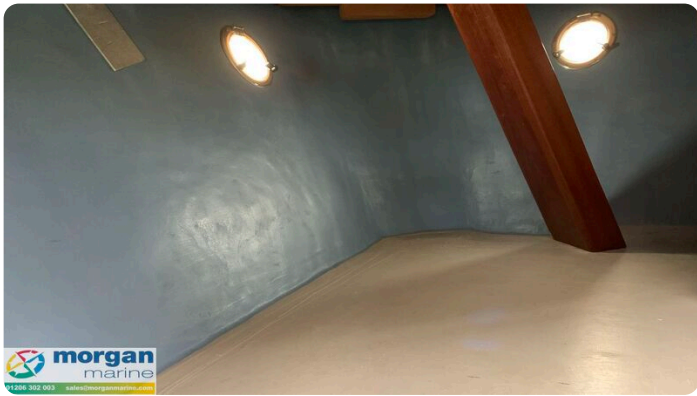
Cabins:	0
Berths:	0

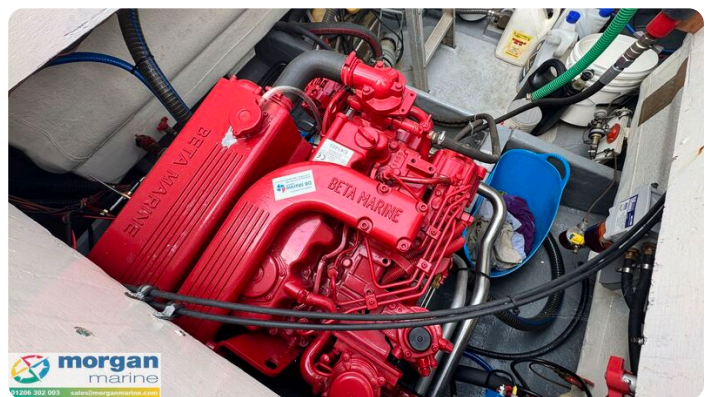
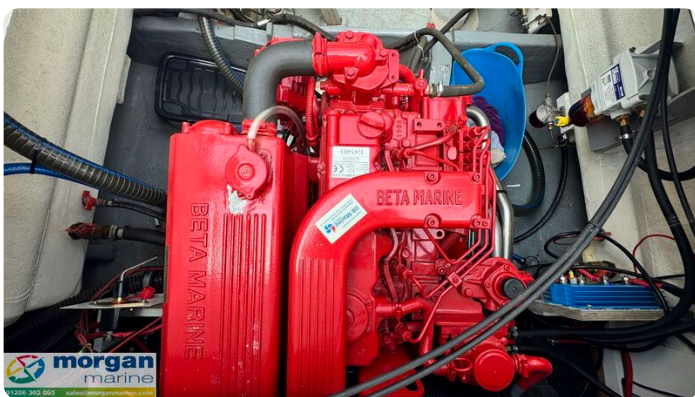
# Images

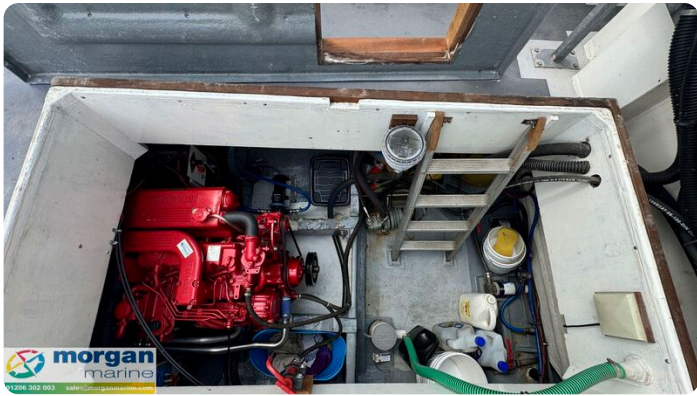


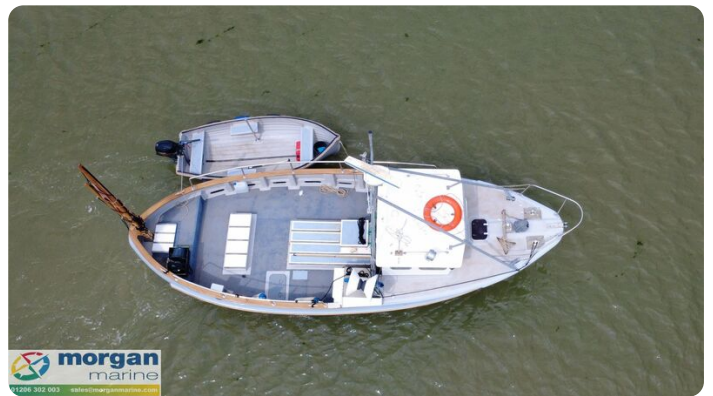














**Morgan Marine**

The Boatyard, Shipyard Estate  
CO7 0AR Colchester  
United Kingdom (UK)

Phone: 44(0)1206302003

<https://morganmarine.com>

