



# De Kloet Fellowship 27

€1,900 • Norddeutschland Germany • Used • 1973

## Presented by

Jan Spengler  
Phone: +49 4101 5155566

**Michael Schmidt &  
Partner Yachthandels  
GmbH**

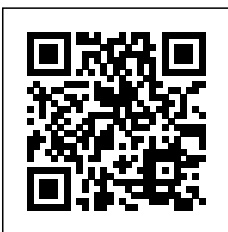
Rübekamp 5  
25421 Pinneberg  
Germany



Michael Schmidt & Partner  
International Yachtbrokers

## Details

Make:	De Kloet
Model:	Fellowship 27
Year:	1973
Condition:	Used
Engine:	Nanni 2.40HE, 10 hp
Engine type:	
Fuel type:	Diesel
Fuel tank:	20 l (5.28 gal)
Length:	8.2 m (26.90 ft)
Beam:	2.49 m (8.17 ft)
Cabins:	0
Berths:	0



Michael Schmidt &  
Partner Yachthandels  
GmbH



7zea.com

# Description

EN

Fellowship 27 as a refit. All data without guarantee.

Staging and technical:  
Teak Cockpit, Strand rigging, swimming ladder.

Domestic Facilities onboard:  
Manual Toilet.

IT

Fellowship 27 come refit. Tutti i dati senza garanzia.

Allestimento tecnico e di coperta:  
Pozzetto Teak, Sartieme spiroidale, Scaletta da bagno.

Dotazioni domestiche di bordo:  
WC marino manuale.

FR

Fellowship 27 comme un carénage. Toutes les données sans garantie.

Equipement de pont:  
Cockpit en teck, Gréement monotoron, Echelle de bain.

Equipement intérieur:  
Toilettes manuelles.

DE

Fellowship 27 als RefitObjekt abzugeben. Alle Daten ohne Gewähr.

Deck und technische Ausrüstung:  
Teak im Cockpit, Stehendes Gut, Badeleiter.

Anlagen an Bord:  
manuelles WC.

ES

Fellowship 27 como reacondicionamiento. Todos los datos sin garantía.

Equipo técnico y de cubierta:  
Bañera en teca, Strand aparejo, Escalera de baño.

Enseres domesticos de abodo:  
WC marino manual.

NL

Fellowship 27 als een refit. Alle gegevens zonder garantie.

Technische- en dekuitrusting:  
Teak in kuip, Staand want, Zwemtrap.

Huishoudelijke apparatuur aan boord:  
Handmatige toilet.

RU

Стипендия 27 в качестве рефита. Все данные без гарантии.

Техническое оснащение и оснащение палубы:  
Колодец из тика, Талрепы спираль, Трап ванной.

Бытовое оснащение на борту:  
Ручной морской туалет.

## General information

Make:	De Kloet
Model:	Fellowship 27
Year:	1973
Condition:	Used

## Engine

Engine:	Nanni 2.40HE, 10 hp
Engine type:	
Fuel type:	Diesel
Fuel tank:	20 l (5.28 gal)

## Measurements

Length:	8.2 m (26.90 ft)
Beam:	2.49 m (8.17 ft)
Deep:	1.1 m (3.61 ft)
Weight:	0 kg (0.00 lb)

## Accommodation

Cabins:	0
Berths:	0

# Images



Foto auf Trailer



IMG\_20231127\_115530



IMG\_20231127\_115532



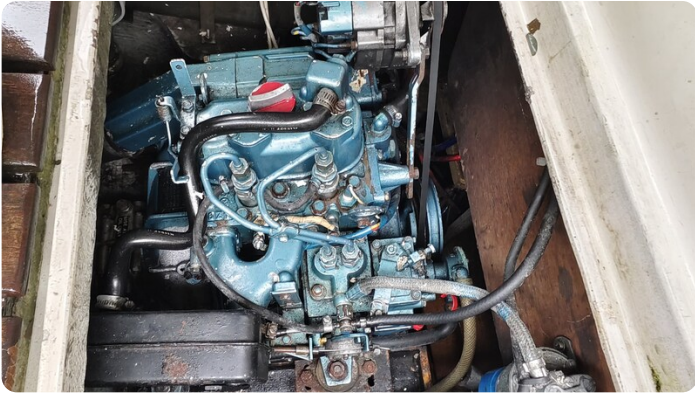
IMG\_20231127\_115539



IMG\_20231127\_115541



IMG\_20231127\_115555



IMG\_20231127\_115728



IMG\_20231127\_114912



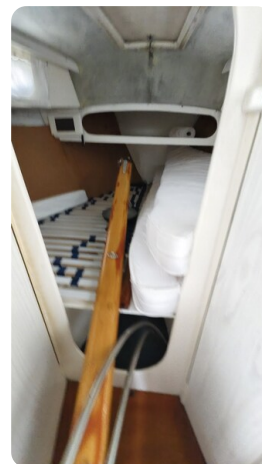
IMG\_20231127\_115500



IMG\_20231127\_115506



IMG\_20231127\_115509



IMG\_20231127\_115512



IMG\_20231127\_115521



IMG\_20231127\_115525



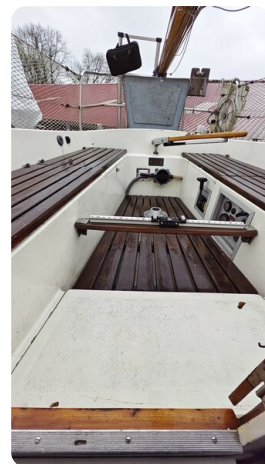
IMG\_20231127\_115527



IMG\_20231127\_115530



IMG\_20231127\_115539



IMG\_20231127\_115658

**Michael Schmidt & Partner Yachthandels GmbH**

Rübekamp 5  
25421 Pinneberg  
Germany

Phone: +49 4101 5155566

<https://www.msp-yacht.de>



**Michael Schmidt & Partner**  
**International Yachtbrokers**