



Cornish Shrimper 19 MK1

£8,995 • Brightlingsea United Kingdom (UK) • Used • 1985

Presented by

Peter Marchant
Phone: 44(0)1206302003

Morgan Marine

The Boatyard, Shipyard
Estate
CO7 0AR Colchester
United Kingdom (UK)



Details

Make:	Cornish
Model:	Shrimper 19 MK1
Year:	1985
Condition:	Used
Engine:	, 660 hp
Engine type:	
Length:	5.86 m (19.23 ft)
Beam:	2.18 m (7.15 ft)
Cabins:	0
Berths:	0



Morgan Marine



7zea.com

Description

EN

Cornish Shrimper 19 MK1 designed by Roger Dongray just in at Morgan Marine. Built by hand laid glass fibre with wood trim. She has been much loved by her current owner and has just been recently refurbished . This boat comes with a Tohatsu 5hp, 2 wheel road trailer, trailer tyre spare, and rigging. Ballast floor and centre blade all re done professionally by Pin Mill. Sails are not new but appear in good condition. This classic sailing yacht has been well maintained and is ready to give a family a great sailing experience as a classic boat.

Deck: Jib and roller reefing. Masts in excellent condition. All woodwork sanded, and repaired. Boat varnished, repainted, and hull re-antifouled. Anchor, chain and rope. Sail cover. Anchor and rope. Tiller steering. Fender and rope. Cleats. Shrimper tent. Port holes. Shrimper tent. Cockpit cover.

Cabin: 2 Berth. Wood panel sided. Lockers and cupboards storage. Very clean and tidy inside

Cockpit: Hand bilge pump. Wooden Duckboards. Large amounts of seating.

Electronics: NASA Target depth sounder. NASA speed and distance. Standard Horizon VHF radio (In Cabin). New aerial. Compass.

Machinery: Tohatsu 5hp with tiller steering. 25L Fuel tank.

Trailer: 2 wheel braked back bracket trailer with jockey wheel, hitch and winch. Spare trailer wheel. Braking system re done on trailer.

General information

Make:	Cornish
Model:	Shrimper 19 MK1
Year:	1985
Condition:	Used

Engine

Engine:	, 660 hp
Engine type:	

Measurements

Length:	5.86 m (19.23 ft)
Beam:	2.18 m (7.15 ft)
Deep:	1.2 m (3.94 ft)
Weight:	0 ()

Accommodation

Cabins:	0
Berths:	0

Images



Cornish-Shrimper-19-mk1-



Cornish-Shrimper-built



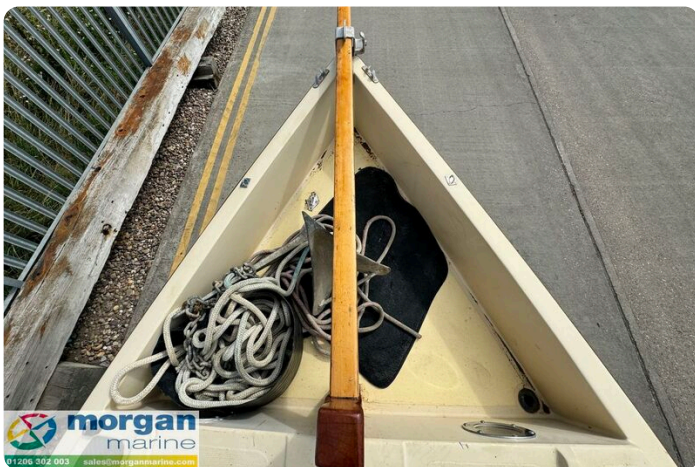
Cornish-Shrimper-19-nasa



Cornish-Shrimper-19-hatch-lock



Cornish-Shrimper-19-ropes



Cornish-Shrimper-19-anchor



Cornish-Shrimper-19-cabin



Cornish-Shrimper-19-front-locker



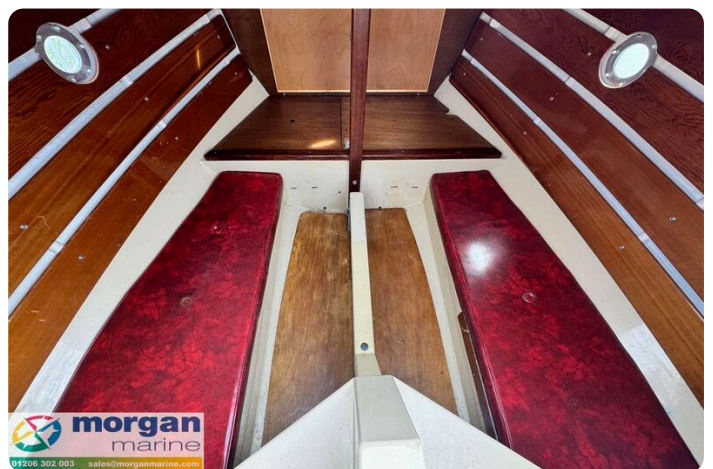
Cornish-Shrimper-19-vhf-radio



Cornish-Shrimper-19-berths



Cornish-Shrimper-19-battery



Cornish-Shrimper-19-cabin-1



Cornish-Shrimper-19-antifouled



Cornish-Shrimper-19-main



Cornish-Shrimper-19-side



Cornish-Shrimper-19-main-pic



Cornish-Shrimper-19-main-pic-1



Cornish-Shrimper-19-trailer



Cornish-Shrimper-19-rudder-2



Cornish-Shrimper-19-rudder



Cornish-Shrimper-19-stern



Cornish-Shrimper-19-deck



Cornish-Shrimper-19-whinch



Cornish-Shrimper-19-bow



Cornish-Shrimper-19-bow-bars



Cornish-Shrimper-19-engine



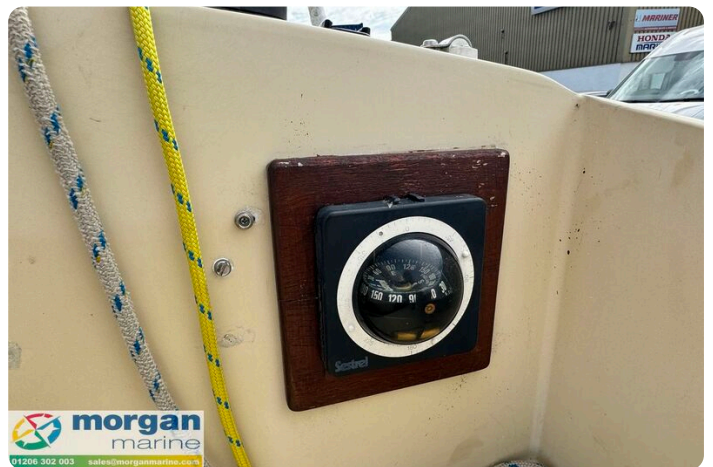
Cornish-Shrimper-19-tiller



Cornish-Shrimper-19-deck



Cornish-Shrimper-19-hatch



Cornish-Shrimper-19-compass

Morgan Marine

The Boatyard, Shipyard Estate
CO7 0AR Colchester
United Kingdom (UK)

Phone: 44(0)1206302003

<https://morganmarine.com>

