



Azimut 42

£145,000 • Weymouth United Kingdom (UK) • Used • 1999

Presented by

Justin Garwell
Phone: +44 (0) 1305 766504

JD YACHTS LIMITED
80 THE ESPLANADE
DT4 7AA WEYMOUTH
United Kingdom (UK)



Details

Make:	Azimut
Model:	42
Year:	1999
Condition:	Used
Engine:	Caterpillar, 390 hp
Engine type:	
Length:	13.21 m (43.34 ft)
Beam:	4.11 m (13.48 ft)
Cabins:	0
Berths:	0



JD YACHTS
LIMITED



7zea.com

Description

ENG
1999. 2 x 390 HP Caterpillar
4 berths in 2 cabins
Lying: Weymouth UK
Owners Comments:
First Commissioned in 1999

ENG
Extras

Raytheon Pathfinder SL70 Radar Display to Lower Helm
Simrad NSS7 Chartplotter to Lower Helm
Standrard Horizon GPS Chartplotter to Upper Helm
Radar Dome
Autohelm ST5000+ Autopilot to Lower Helm
Bennett Trim Tab displays to Lower Helm
Autohelm ST6000+ to Upper Helm
ICOM VHF to both Upper & Lower Helms
Eberspacher Diesel Heating
Cruisair Air Conditioning
Kohler Generator
Hydraulic Passarelle
Vetus Bowthruster

Standard Specification

Master Stateroom

Large island double berth
Hanging Locker
Additional storage under bed

Master Head

En suite complete with wash basin
Electric flush toilet
Rotating shower stall

Galley

Corner galley to Port
2 Ring Electric Hob
Convection Oven
Refrigerator

Saloon

Central saloon area with U-shaped settee to Starboard.
Additional settee to Port
Adjustable height dining table

Engine & Mechanics

Kohler Generator 9Kw
Bow & Stern Thruster
Battery Charger
Shore Power

Guest Cabin

Twin single berths
Hanging locker

Guest/Day Head

Accessible from both companionway and guest cabin
Wash basin, electric flush toilet and shower

Exterior

Deck Cushions
Bimini
Hydraulic Gangway
Underwater Lights

Anchorage & Safety

Electric Windlass
Chain Counter
Chrome Ultra Anchor
Electric Search Light
Auto Fire Extinguisher
Automatic Bilge Pump

Navigation

Chartplotter
Raytheon Pathfinder RL70 Radar Display
Raytheon ST4000+ Autopilot
Tridata
VHF
Depth Sounder

General information

Make:	Azimut
Model:	42
Year:	1999
Condition:	Used

Engine

Engine:	Caterpillar, 390 hp
Engine type:	

Measurements

Length:	13.21 m (43.34 ft)
Beam:	4.11 m (13.48 ft)
Deep:	2.37 m (7.78 ft)
Weight:	15 ()

Accommodation

Cabins: 0

Berths: 0

Images



Image courtesy of JD Yachts



Image courtesy of JD Yachts



Image courtesy of JD Yachts



Image courtesy of JD Yachts



Image courtesy of JD Yachts



Image courtesy of JD Yachts



Image courtesy of JD Yachts



Image courtesy of JD Yachts



Image courtesy of JD Yachts



Image courtesy of JD Yachts



Image courtesy of JD Yachts



Image courtesy of JD Yachts



Image courtesy of JD Yachts



Image courtesy of JD Yachts



Image courtesy of JD Yachts



Image courtesy of JD Yachts



Image courtesy of JD Yachts



Image courtesy of JD Yachts



Image courtesy of JD Yachts



Image courtesy of JD Yachts



Image courtesy of JD Yachts



Image courtesy of JD Yachts



Image courtesy of JD Yachts



Image courtesy of JD Yachts



Image courtesy of JD Yachts



Image courtesy of JD Yachts



Image courtesy of JD Yachts

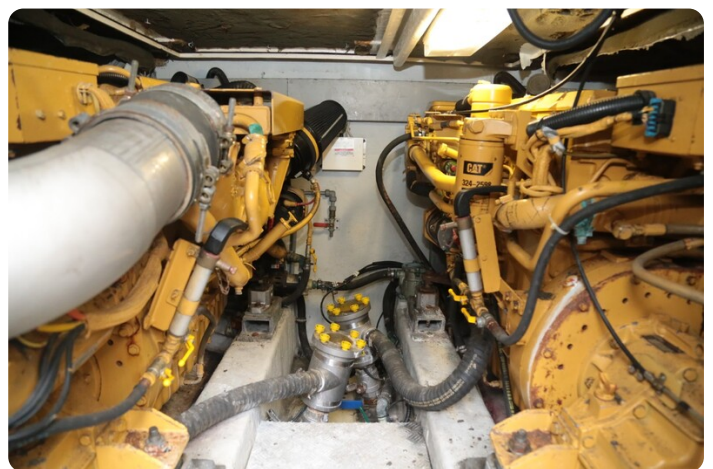


Image courtesy of JD Yachts



Image courtesy of JD Yachts



Image courtesy of JD Yachts

JD YACHTS LIMITED

80 THE ESPLANADE
DT4 7AA WEYMOUTH
United Kingdom (UK)

Phone: +44 (0) 1305 766504

<http://jdyachts.com>



 YACHTS.

The logo consists of a stylized 'JD' monogram in orange and white, followed by the word 'YACHTS.' in white, all set against a black square background.